

# Department of Rules

Axshog  
5440 Tujunga Ave  
North Hollywood, CA 90028



## O'Fish Phase Rules

September 23, O'Fish

# Corporate Loyalty Program

1. Any Dog who wishes to phase in to Netrunner must declare allegiance to a Corporation. Once declared, this is the only Corporation whose agendas you may advance for the duration of the phase.

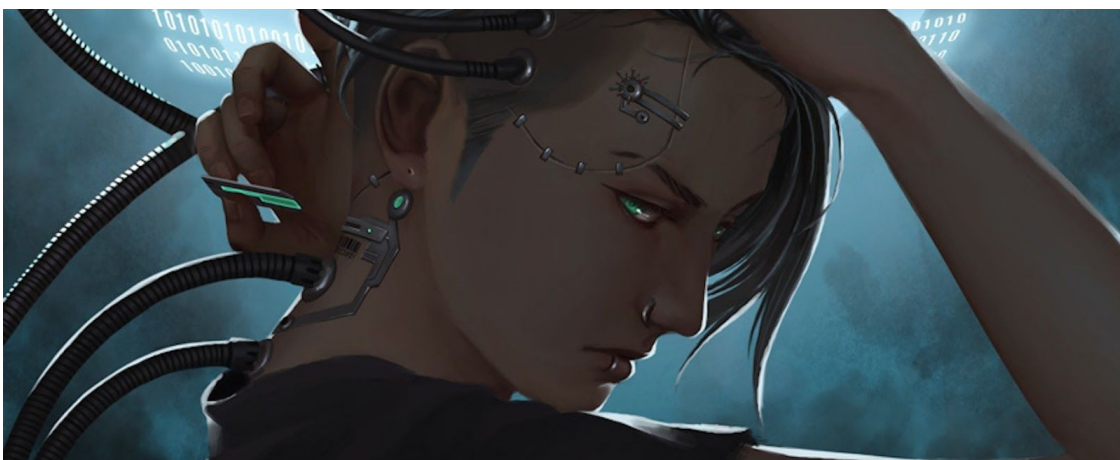


## Run Last Click

2. Each Dog phased in must also lay claim to one unclaimed Runner I.D. for the duration of the phase. No Dog may play a claimed Runner I.D. except the claimant. Dogs are free to unclaim a runner ID at any point, at the cost of 1 shog forfeit to the Department of Rules.

## Dibs the Foost?

3. At the start of the phase, debate the foost for initial Runner ID claims. If an I.D. is contested by multiple Dogs, use shog bidding to determine who's serious. If the maximum amount of shog given by contestants is the same, go to Judgment. If Judgment is not available, flip 2 flip.



## Addendums

1. The baseline format, unless further specified, is the first rotation along with the NAPD Most Wanted list 2.2, found [here](#). The first rotation card pool includes all data packs except Genesis and Spin cycles, all deluxe expansions, revised core set and terminal directive. Genesis and Spin data packs, along with core set cards not reprinted in the revised core are not the sitch. Those miser Magnum Opus championship promo cards are also not the sitch.

